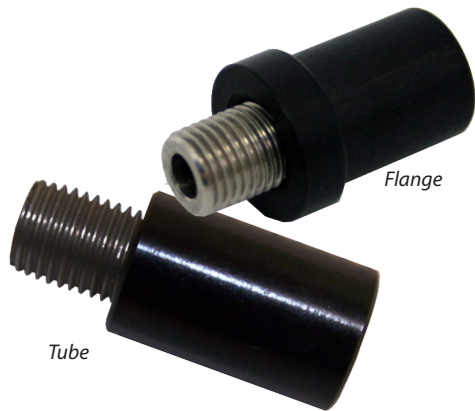


CLA-SMA Collimating Lens Assembly

Spectrometer Accessory



The CLA-SMA collimating lens converts divergent rays of light into parallel rays. The lens is fabricated from fused silica and can be used over a broad spectral range, UV/Vis/NIR. The CLA-SMA attaches to an SMA 905 connector of a Fiber Patch Cord and Fiber Assemblies from B&W Tek. When used with a fiber cord attached to a light source, the CLA-SMA produces a parallel (collimated) beam of light. When the fiber cord is attached to a spectrometer, the CLA-SMA provides a narrow acceptance angle and narrow field-of-view.

Specifications:

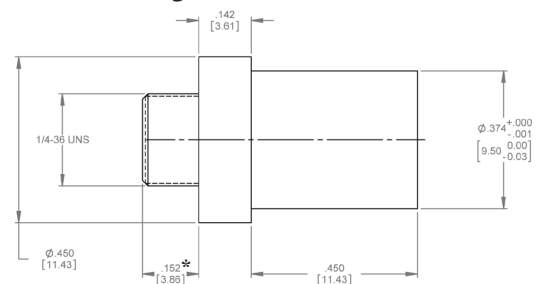
Wavelength Spectral Range	190 - 2100 nm
Lens Material	Fused silica
Focal Length	9 mm
Lens Clear Aperture	6 mm
Effective Aperture	4 mm with NA 0.22 single core fiber
Operating Temperature	0 - 70°C
Humidity Range	0 - 85% RH Non Condensing

Applications:

- Light Collection
- Reflectance
- Absorption
- Irradiance Calibration (with proper setup)

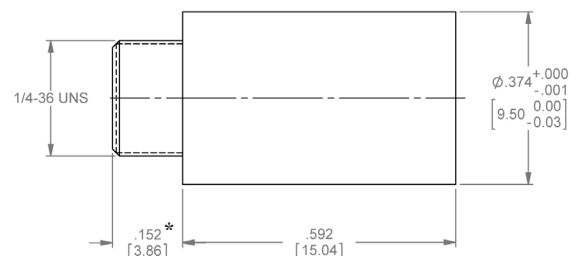
Dimensions:

CLA-SMA (Flange)



UNIT: INCH [MM]

CLA-SMA-2 (Tube)



UNIT: INCH [MM]

**This measurement is a reference number*

Transmission / Absorption Experiment Setup:

