

Light Source

SCL101 Spectral Calibration Source



The SCL101 spectral calibration source comes in 6 lamp models: Argon (Ar), Krypton (Kr), Mercury (Hg), Mercury/Argon (Hg/Ar), Neon (Ne), and Xenon (Xe). These sources can be used for wavelength calibration of monochromators, spectrometers and spectroradiometers. By exciting these various gases, they will produce narrow intense lines of the corresponding element(s). This light source comes with a 9V DC power supply and features an SMA905 connector for fiber optic light coupling with no need for fiber alignment.

Applications:

- Calibration of Spectroscopic Instrumentation
- Resolution Testing / Verification

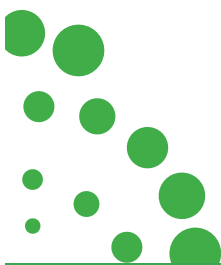
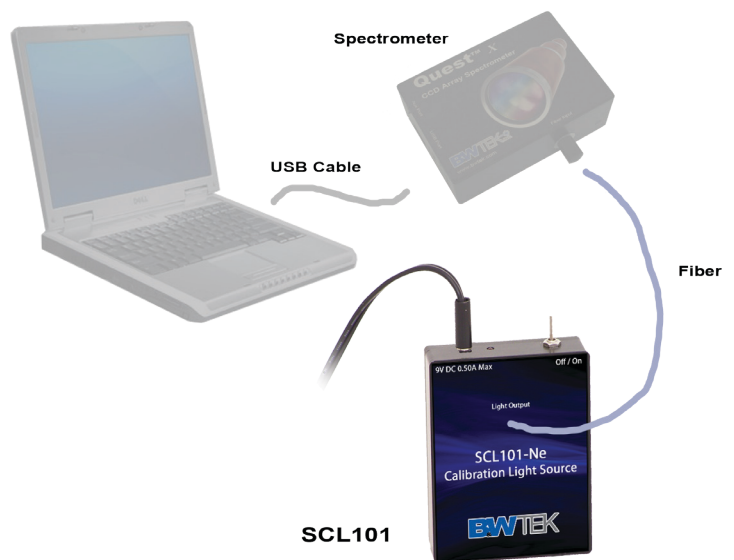
Features:

- Compact & Lightweight
- Portable Battery Operation
- Fiber Coupled
- Various Lamp Selections UV - NIR
- Excellent Stability

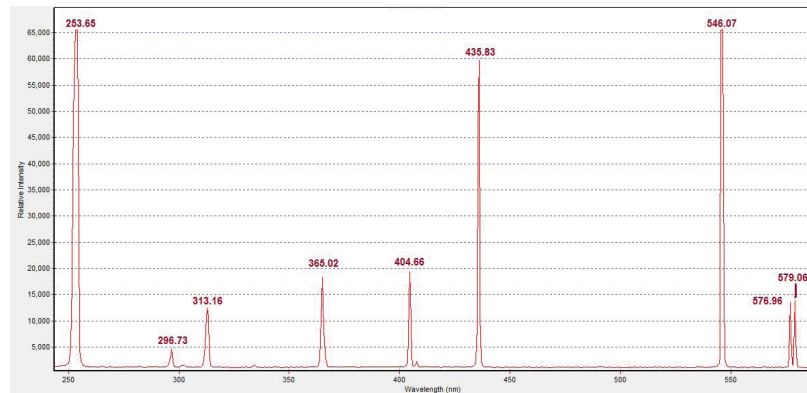
Specifications:

AC Adapter Input	100 - 240V, ~47 - 63Hz
AC Adapter Output	9V DC 0.3A Max
Lamp Operation Voltage	<=350 V rms, +/- 5%
Lamp Operation Current	5mA, +/- 5%
Light Coupling	SMA905
Operating Temperature	0° to 70°C
Humidity	0-85% RH Non-condensing
Dimensions	3.35in x 2.75in x 1.22in (85mm x 70mm x 31mm)
Weight	0.3lbs (0.135kg)

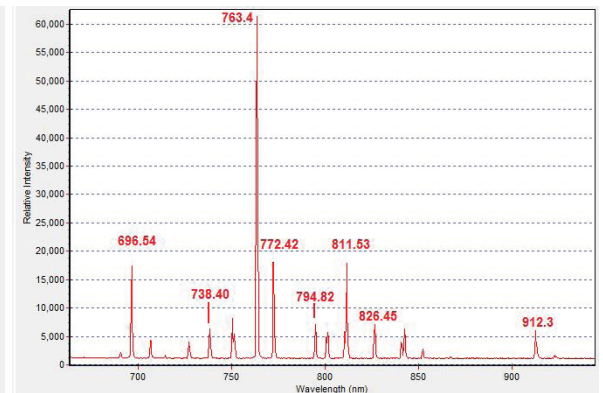
Calibration / Resolution Verification Setup:



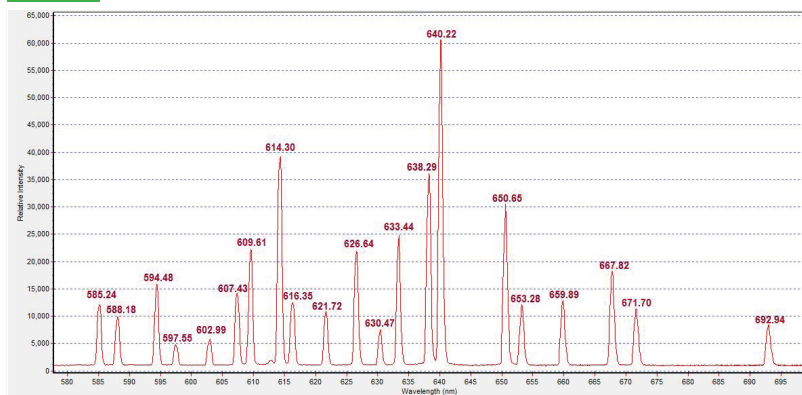
Mercury:



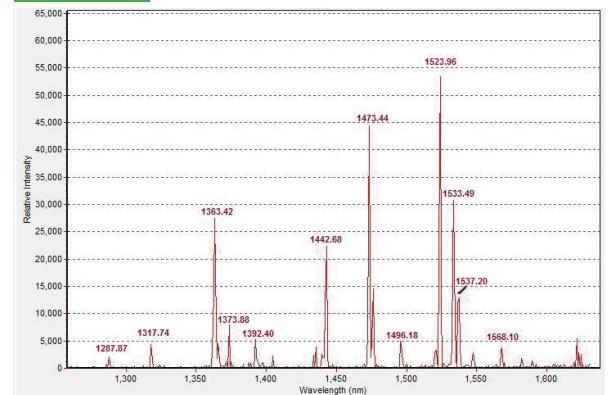
Argon:



Neon:



Krypton:



Mercury has strong spectral lines throughout the UV-Vis region. The Argon line spectrum features a number of high intensity spectral lines between 700nm and 1000nm. There are also several lines spaced less than 1nm apart that can be used for resolution testing. Neon and Xenon have a large number of lines of medium to high intensity in the 800nm - 2400nm range for wavelength calibration and resolution testing in the NIR region.

